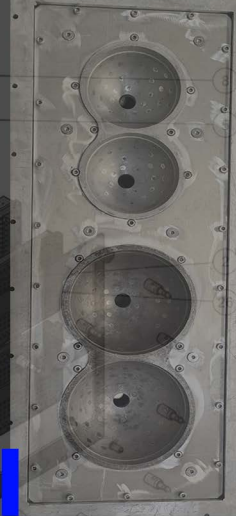




# R&T Machines For EPS Molds & Custom parts

[www.rtmachines.com](http://www.rtmachines.com)



PHONE  
01111857037

WEB  
[www.rtmachines.com](http://www.rtmachines.com)

ADDRESS  
Building 510, Sixth  
District, October 6th,,Giza



# Who we are

---

At R&T Machines, we are a dedicated team of professionals specializing in EPS Mold production. With years of experience in the industry, our team comprises skilled engineers, technicians, and experts who are passionate about delivering high-quality EPS Molds.

**Let's talk!**

[www.rtmachines.com](http://www.rtmachines.com)

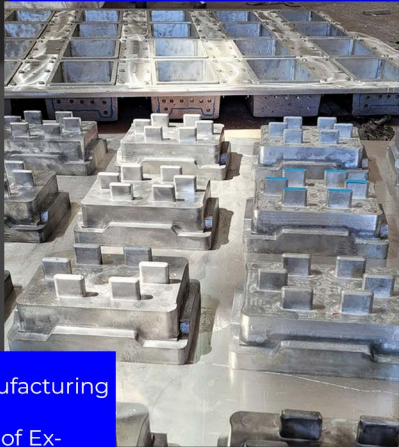


# Molds

Our company specializes in manufacturing high-quality molds that meet the highest standards in accuracy, durability, flexibility, ease of use, venting and release, heat and chemical resistance, size and scalability, and cost-effectiveness. Our molds accurately reproduce intricate shapes, are made from durable materials



# CNC Machining



Our Egyptian-based manufacturing facility specialises in creating moulds made of Expanded Polystyrene (EPS). The quality and meticulousness you anticipate from your provider have always been met by us

---



www.rtmachines.com

## EPS Mold

Our rigorous quality control processes ensure that every component meets strict standards for durability, precision, and performance. With us, you can trust that you're receiving premium products

---





www.rtmachines.com

## EPS Mold

At R&T Machining, we specialize in providing high-quality EPS mold frames that redefine precision and efficiency, our mold frames can revolutionize your production capabilities

---



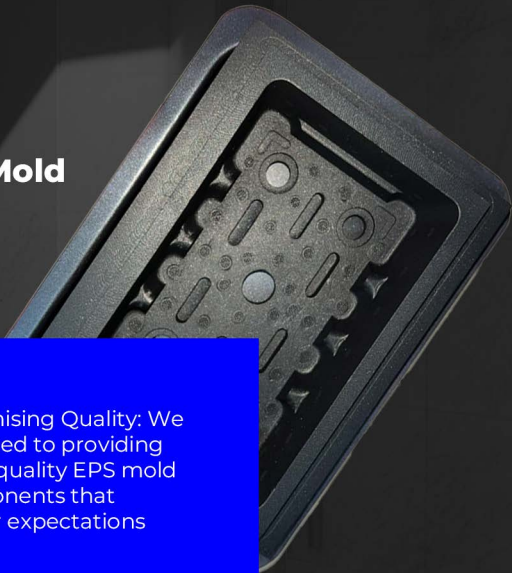


www.rtmachines.com

## EPS Mold

Uncompromising Quality: We are committed to providing the highest quality EPS mold foam components that exceed your expectations

---





[www.rtmachines.com](http://www.rtmachines.com)

# Engineering

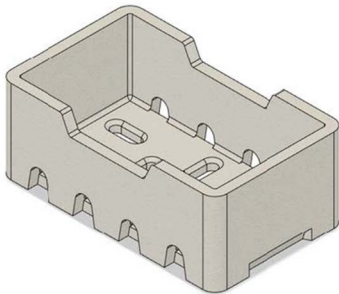
---





www.rtmachines.com

## Engineering



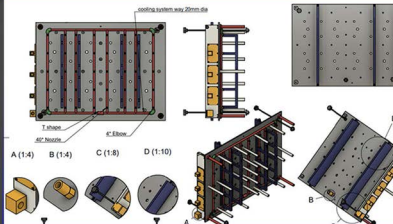
The injection molding draft angle is an essential geometric feature built into molds for injection molding. It is the taper, or degree of inclination of the mold's walls along the drawing direction





www.rtmachines.com

# Engineering



The design department utilizes the latest techniques to extract coordinates from the product to precision laboratories. Therefore we draw the product using three-dimensional technology.

---



www.rtmachines.com

## Sand Casting

The metal mold has a faster cooling rate and a denser structure of the casting, which can be strengthened by heat treatment, the quality of castings is stable, the surface roughness is better than sand casting and the rate of waste crystal is low. The working conditions are good, the productivity is high, and the workers are easy to master.

---





www.rtmachines.com

## Sand Casting



The metal mold has a faster cooling rate and a denser structure of the casting, which can be strengthened by heat treatment, the quality of castings is stable, the surface roughness is better than sand casting and the rate of waste crystal is low. The working conditions are good, the productivity is high, and the workers are easy to master.

---



www.rtmachines.com

## Casting Advantages

Only our risers prevent shrinkage issues. By modifying traditional feeds, they distribute aluminum homogeneously throughout for unparalleled consistency

---





[www.rtmachines.com](http://www.rtmachines.com)

# CNC Machining

---



www.rtmachines.com

## CNC machining



Precision equipment: We invest in the latest CNC machines that cut with high accuracy for a perfect fit every time



www.rtmachines.com

## High-Quality Components

We only use the highest quality aluminum plates, profiles, and castings in our molds so they can withstand pressures and vibrations during the molding process

---





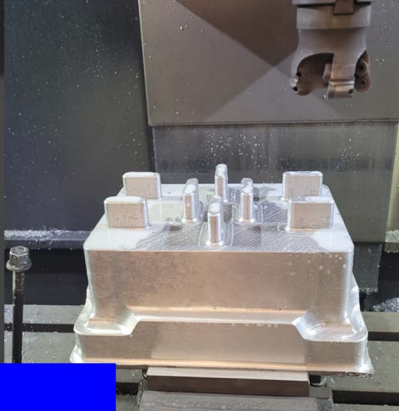


www.rtmachines.com

## High-Quality Components

Rigid automation: Our team uses custom fixtures to lock parts into repeatable positioning runs, ensuring reliable achievement of our

---





[www.rtmachines.com](http://www.rtmachines.com)

# Our Finishing

---



www.rtmachines.com

## Teflon Coating



We can provide teflon coating upon request. We use the highest quality Teflon aluminum plates, profiles, and castings in our molds so they can withstand pressures and vibrations during the molding process



www.rtmachines.com

## Core and cavities finish



The mold design of the core and cavity is critical to the proper molding of the product



www.rtmachines.com

## Cooling system



The mold design of the core Cooling System makes less maintenance than replacing parts after getting damaged .by overheating proper molding of the .product



www.rtmachines.com

## Our Frame

---



At R&T Machining, we specialize in providing high-quality EPS mold frames that redefine precision and efficiency



Give us a visit!  
**Factory**

Building 510, Sixth  
District, October 6th,

**We are  
Equipped for you**

**PHONE**  
+201111857037  
+201050011277

**WEB**  
info@rtmachines.com  
www.rtmachines.co

**ADDRESS**  
Building 510, Sixth  
District, October 6th,